

Site visit

Facility name: City of Flippin
NPDES Permit No. AR0021717
Date: June 21, 2007
Participants: Bruce Kirkpatrick, Inspector, District II
Scott Garrison, Operator

I asked Bruce Kirkpatrick to collect/record coordinates for sampling locations and Outfall 001 and take some photos of the wastewater treatment units while he was inspecting this facility on June 21, 2007.

1. Sampling locations:

Flow is monitored prior to post aeration unit – Coordinates:
Latitude: 36 deg 16' 59", Longitude: 92 deg 35' 06"

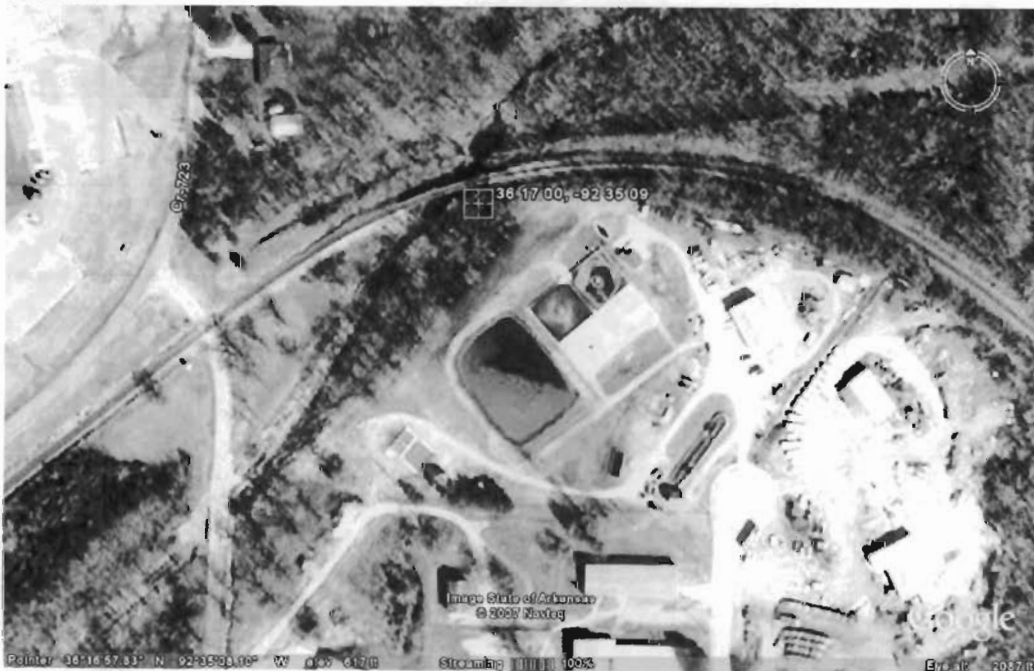
All other parameters are sampled after post aeration unit- Coordinates:
Latitude: 36 deg 17' 00", Longitude: 92 deg 35' 07"

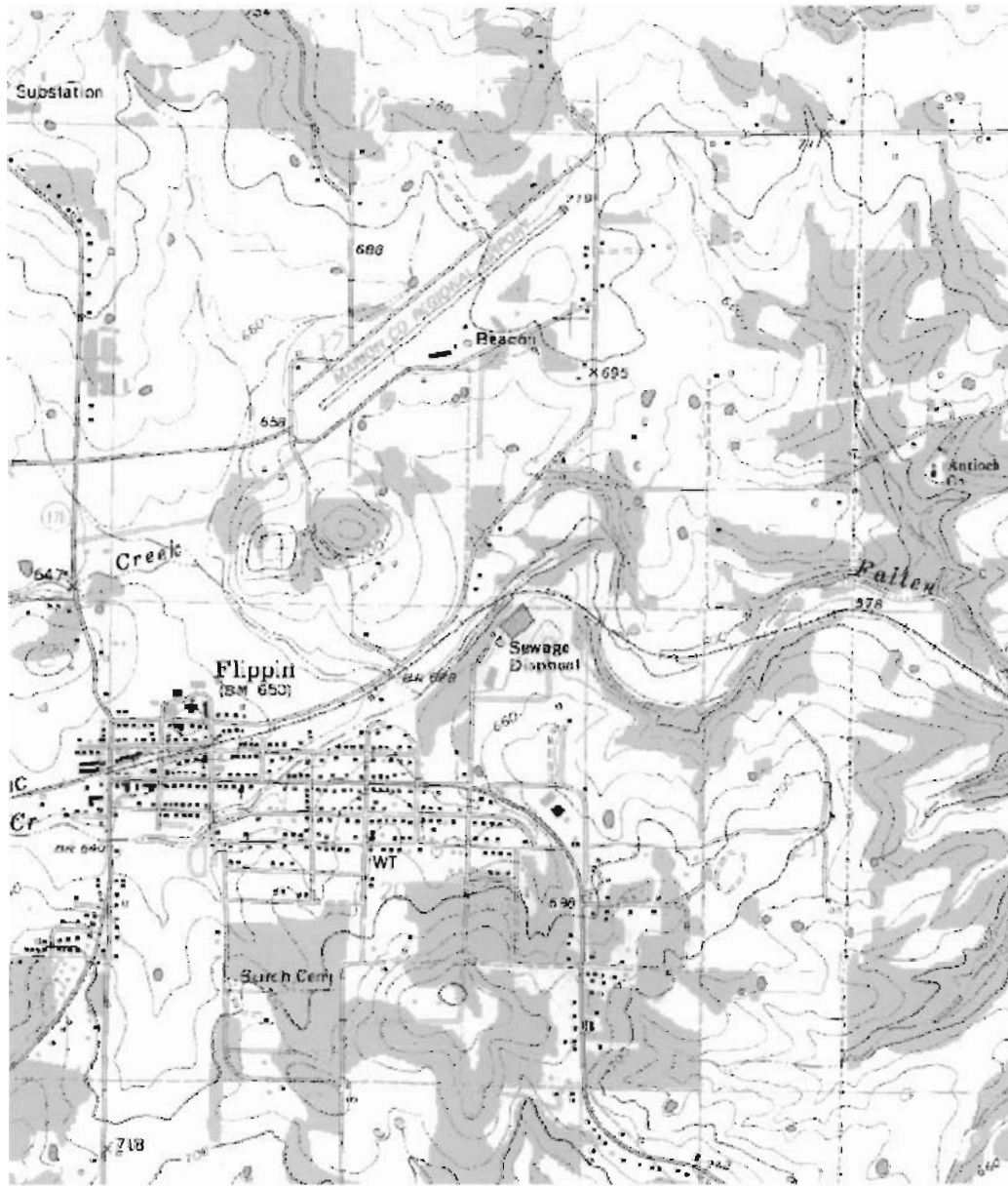
Outfall 001: Coordinates: Latitude: 36° 17' 00"; Longitude: 92° 35' 10"

2. Treatment units:

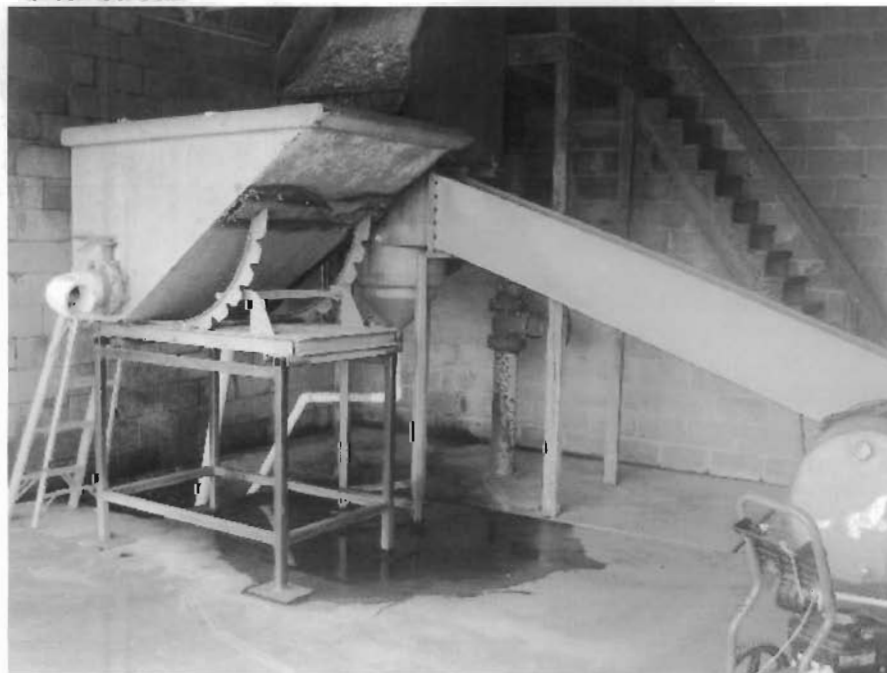
Vortex screen (works as screen and removes grit, too)
Extended aeration Activated sludge – oxidation ditch
Final clarifiers- two operated in series
Dosing tank
Intermittent Sand filters
UV disinfection
Post-aeration

Photos:





vortex screen:



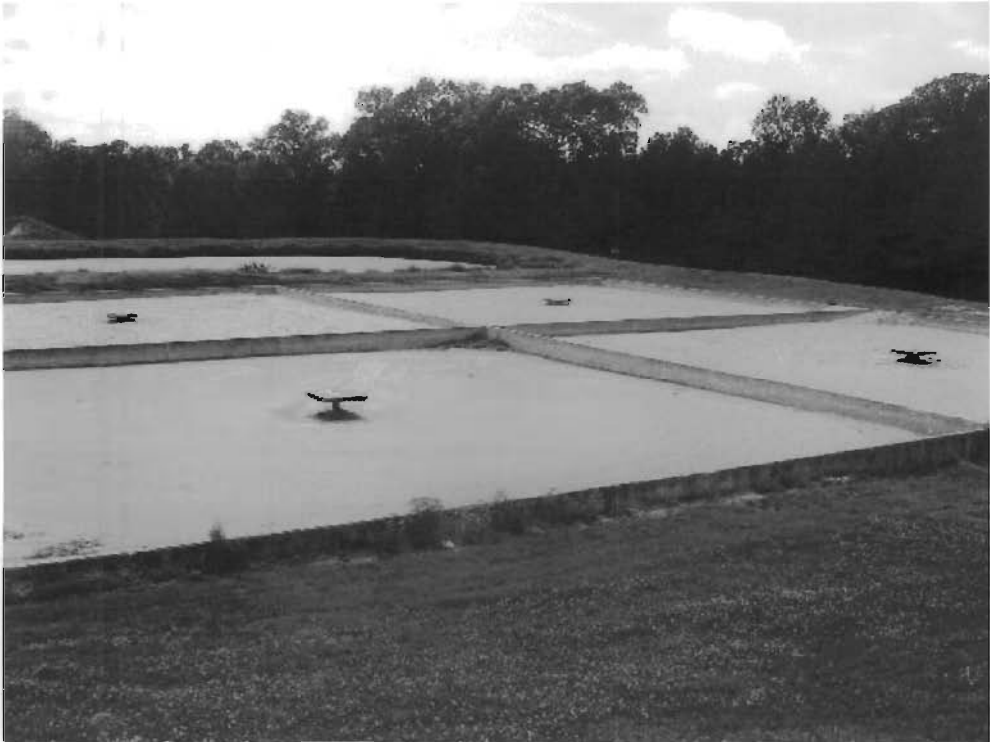
oxidation ditch:



clarifiers:



Intermittent sand filter (equalization basin in the background):



dosing tank:



UV disinfection:



flow meter (foreground, post aeration in the background)



Outfall 001:

